

TIDEMARINE

innovative products for the marine industry



PRICES –VOLUME 9

Table of Contents

Self-Aligning Shaft Seals

SureSeal™ Shaft Seals P.2	SureSeal™ Shaft Seal Kits P.3	SureSeal™ Spare Seal Carrier Kits P.4	Strong™ Seal Spare Seal Carrier Kits P.5
			
Water Pick-Up Kit with Hose Tee Fittings P.6	Water Pick-Up Kit with Hose Barb Fittings P.6	Hose Tee Fittings P.6	SmartSeal™ Temperature Alarm System P.7
			
seriesOne™ Shaft Seals P.8	seriesOne™ Shaft Seal Kits with Single Convolution Hose P.8	seriesOne™ Shaft Seal Kits with Multi Convolution Hose P.9	SureSeal™ Replacement Nitrile Lip Seals P.10
			
Strong™ Seal Replacement Nitrile Lip Seals P.11	Articulating Hose P.12	Hose Clamps Non-Perforated P.12	
			

Rudder Bearing Systems

Upper Rudder Bearing Standard P.13	Upper Rudder Bearing Low Profile P.13	Rudder Port/Bearing Tube System P.14	Rudder Port/Bearing Type C P.14
			

Table of Contents

Rudder Bearing Systems

Rudder Port/Bearing Type D P.15	Rudder Port/Bearing Type E P.15	Rudder Port/Bearing Type F P.16	Rudder Port/Bearing Type G (without seal) P.16
			
Rudder Port/Bearing Type H (without seal) P.17	Rudder Port/Bearing Type I P.17	Rudder Port/Bearing Type J P.18	Rudder Port/Bearing Type K P.18
			
Rudder Port/Bearing Type K with Insert P.18	Rudder Collars P.19	Spare Rudder Seal Carrier Kits P.19	Nitrile Lip Seals P.20
			
Nitrile Lip Seals for Type D P.21	Zero-Draft FRP Tubes P.22		
			

Sailtrack System

Sailtrack System P.23	Sailtrack System Batten Receptacles P.23	Sailtrack System Replacement Slides P.24	Sailtrack System Headboard Car Assemblies P.25
			

SureSeal™ Shaft Seals (individual)



SureSeal with
Pentagonal Cap
(molded)

or*



SureSeal with
Circular Cap
(machined)

Each SureSeal unit consists of:



Housing, Cap, Split washer,
Lip Seal & Cap Screws

Note*

There are two styles of SureSeals which are sold. Units are either molded with a pentagonal face cap, or machined with a circular face cap.
-BOTH FUNCTION EQUALLY.

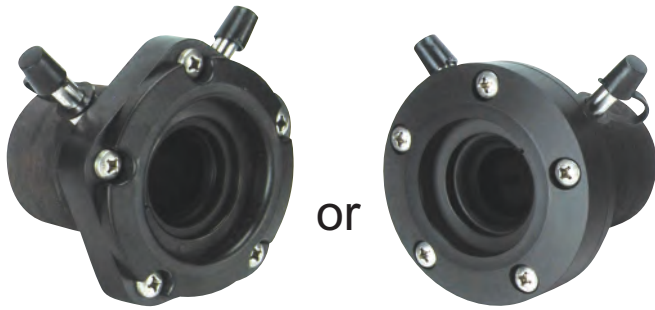
IMPERIAL SIZES

SHAFT DIAMETER	PART NUMBER	PRICE
1"	FSA-1000	270.26
1-1/8"	FSA-1125	294.72
1-1/4"	FSA-1250	294.72
1-3/8"	FSA-1375	310.30
1-1/2"	FSA-1500	443.35
1-3/4"	FSA-1750	490.18
2"	FSA-2000	569.96
2-1/4"	FSA-2250	613.53
2-1/2"	FSA-2500	727.17
2-3/4"	FSA-2750	817.59
3"	FSA-3000	917.34
3-1/4"	FSA-3250	1,023.55
3-1/2"	FSA-3500	1,349.46
3-3/4"	FSA-3750	1,499.54
4"	FSA-4000	1,649.61
4-1/4"	FSA-4250	2,117.20
4-1/2"	FSA-4500	2,584.76
5"	FSA-5000	2,920.40

METRIC SIZES

SHAFT DIAMETER	PART NUMBER	PRICE
25mm	FSA-25M	270.26
30mm	FSA-30M	294.72
35mm	FSA-35M	310.30
40mm	FSA-40M	464.80
45mm	FSA-45M	490.18
50mm	FSA-50M	569.96
55mm	FSA-55M	579.21
60mm	FSA-60M	667.45
65mm	FSA-65M	727.17
70mm	FSA-70M	817.59
75mm	FSA-75M	917.34
80mm	FSA-80M	929.39
85mm	FSA-85M	1,044.67
90mm	FSA-90M	1,349.46
95mm	FSA-95M	1,499.54
100mm	FSA-100M	1,649.61
105mm	FSA-105M	2,000.29
110mm	FSA-110M	2,350.98

SureSeal™ Shaft Seal Kits (kits include everything shown)



Lip Seal Protector



Articulating Hose

**Hose Clamps
Non-Perforated**

IMPERIAL SIZES

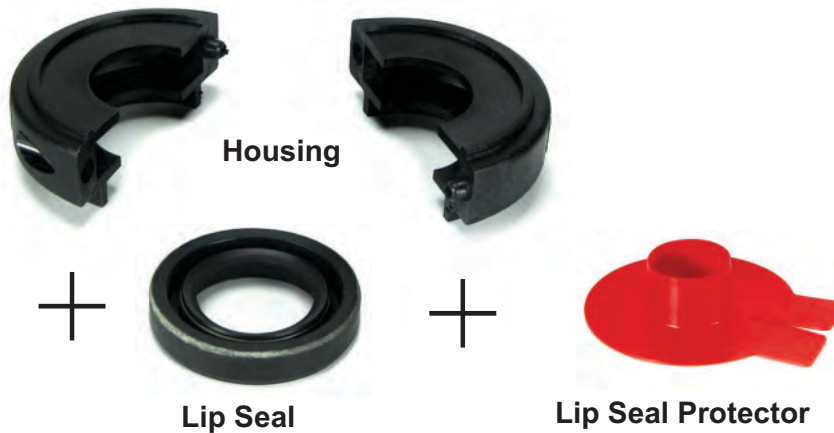
SHAFT DIAMETER	PART NUMBER	PRICE
1"	FSK-1000	348.82
1-1/8"	FSK-1125	387.81
1-1/4"	FSK-1250	394.14
1-3/8"	FSK-1375	420.36
1-1/2"	FSK-1500	570.64
1-3/4"	FSK-1750	606.85
2"	FSK-2000	692.51
2-1/4"	FSK-2250	741.49
2-1/2"	FSK-2500	855.12
2-3/4"	FSK-2750	954.95
3"	FSK-3000	1,062.06
3-1/4"	FSK-3250	1,189.79
3-1/2"	FSK-3500	1,515.71
3-3/4"	FSK-3750	1,829.46
4"	FSK-4000	2,104.73
4-1/4"	FSK-4250	2,382.45
4-1/2"	FSK-4500	2,850.04
5"	FSK-5000	3,323.84

METRIC SIZES

SHAFT DIAMETER	PART NUMBER	PRICE
25mm	FSKM-25M	348.82
30mm	FSKM-30M	387.81
35mm	FSKM-35M	420.36
40mm	FSKM-40M	570.64
45mm	FSKM-45M	606.85
50mm	FSKM-50M	692.51
55mm	FSKM-55M	716.90
60mm	FSKM-60M	795.41
65mm	FSKM-65M	855.12
70mm	FSKM-70M	954.95
75mm	FSKM-75M	1,062.06
80mm	FSKM-80M	1,096.84
85mm	FSKM-85M	1,212.11
90mm	FSKM-90M	1,515.71
95mm	FSKM-95M	1,829.46
100mm	FSKM-100M	2,104.73
105mm	FSKM-105M	2,265.41
110mm	FSKM-110M	2,616.24

SureSeal™ Spare Seal Carrier Kits

Spare Seal Carrier Kits*
(kits include everything shown)



Note*
Carrier Kits on this page
are for **SureSeals™** ONLY
which are shown above
and sold after the year 2000

IMPERIAL SIZES

SHAFT DIAMETER	PART NUMBER	PRICE
1"	KF-1000	86.14
1-1/8"	KF-1125	91.42
1-1/4"	KF-1250	99.28
1-3/8"	KF-1375	105.09
1-1/2"	K-1500	150.16
1-3/4"	K-1750	166.04
2"	KF-2000	193.69
2-1/4"	KF-2250	207.79
2-1/2"	KF-2500	244.11
2-3/4"	KF-2750	276.90
3"	K-3000	312.04
3-1/4"	K-3250	344.53
3-1/2"	K-3500	372.30
3-5/8"	K-3625	386.85
3-3/4"	K-3750	404.79
4"	K-4000	448.22
4-1/4"	K-4250	505.88
4-1/2"	K-4500	563.54
4-3/4"	K-4750	596.95
5"	K-5000	630.35

METRIC SIZES

SHAFT DIAMETER	PART NUMBER	PRICE
25mm	KFM-25MM	86.14
30mm	KFM-30MM	91.42
35mm	KFM-35MM	105.09
40mm	KFM-40MM	150.16
45mm	KFM-45MM	166.04
50mm	KM-50MM	193.69
55mm	KM-55MM	209.45
60mm	KM-60MM	225.23
65mm	KM-65MM	244.11
70mm	KFM-70MM	276.90
75mm	KFM-75MM	312.04
80mm	KM-80MM	337.32
85mm	KM-85MM	344.53
90mm	KFM-90MM	372.30
100mm	KM-100MM	448.22
105mm	KM-105MM	491.46
110mm	KM-110MM	534.70

Note* Kit configurations vary depending on the size ordered:



Kits for shaft sizes up to 1-3/4" or 45mm contain one single Spare Seal Carrier with one Lip Seal



Kits for shaft Sizes 2" to 3" contain two single Spare Seal Carriers with one lip seal in each



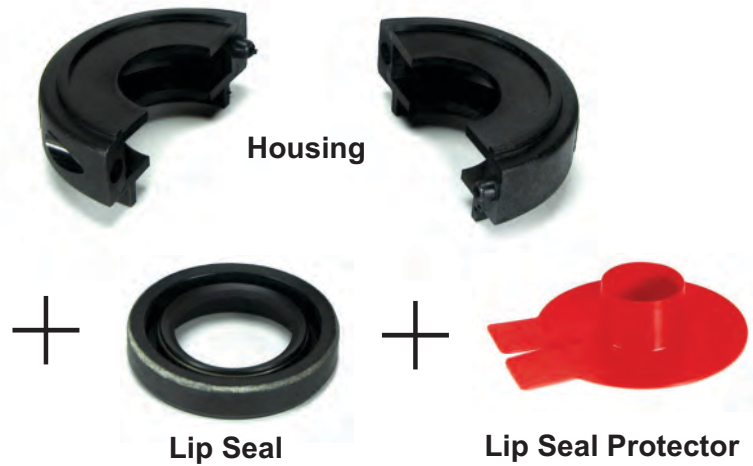
Kits for shaft Sizes greater than 3 1/4" or 50mm contain one double Spare Seal Carrier with two Lip Seals

Strong™ Seal Spare Seal Carrier Kits



Spare Seal Carrier Kits*
(kits include everything shown)

Note*
Carrier Kits on this page are for **Strong™Seals ONLY** which are shown above and were sold prior to the year 2000



IMPERIAL SIZES

SHAFT DIAMETER	PART NUMBER	PRICE
1"	K-1000	86.14
1-1/8"	K-1125	91.42
1-1/4"	K-1250	99.28
1-3/8"	K-1375	105.09
1-1/2"	K-1500	150.16
1-3/4"	K-1750	166.04
2"	K-2000	193.69
2-1/4"	K-2250	207.79
2-1/2"	K-2500	244.11
2-3/4"	K-2750	276.90
3"	K-3000	312.04
3-1/4"	K-3250	344.53
3-1/2"	K-3500	372.30
3-5/8"	K-3625	386.85
3-3/4"	K-3750	404.79
4"	K-4000	448.22
4-1/4"	K-4250	505.88
4-1/2"	K-4500	563.54
4-3/4"	K-4750	596.95
5"	K-5000	630.35

METRIC SIZES

SHAFT DIAMETER	PART NUMBER	PRICE
25mm	KM-25MM	86.14
30mm	KM-30MM	91.42
35mm	KM-35MM	105.09
40mm	KM-40MM	150.16
45mm	KM-45MM	166.04
50mm	KM-50MM	193.69
55mm	KM-55MM	209.45
60mm	KM-60MM	225.23
65mm	KM-65MM	244.11
70mm	KM-70MM	276.90
75mm	KM-75MM	312.04
80mm	KM-80MM	337.32
85mm	KM-85MM	344.53
90mm	KM-90MM	372.30
100mm	KM-100MM	448.22
105mm	KM-105MM	491.46
110mm	KM-110MM	534.70

Note* Kit configurations vary depending on the size ordered:



Kits for shaft sizes up to 1-3/4" or 45mm contain one single Spare Seal Carrier with one Lip Seal



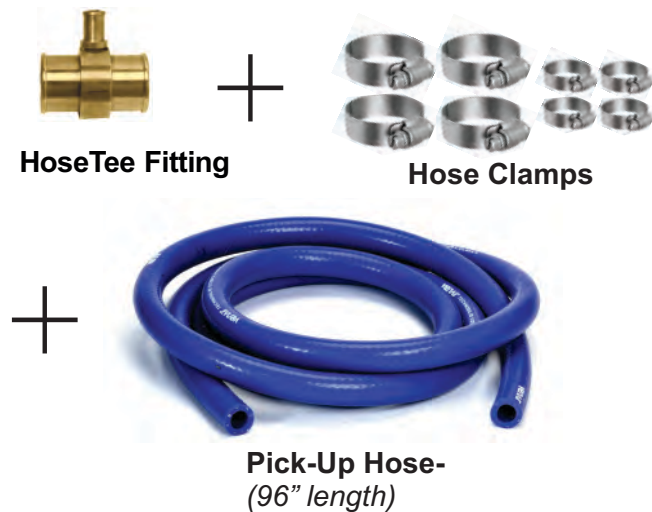
Kits for shaft Sizes 2" to 3" contain two single Spare Seal Carriers with one lip seal in each



Kits for shaft Sizes greater than 3 1/4" or 50mm contain one double Spare Seal Carrier with two Lip Seals

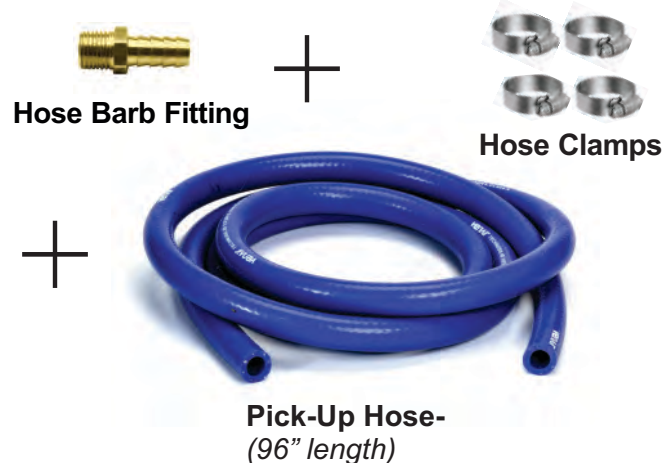
Water Pick-Up Kits and Fittings

Water Pick-Up Kits with Hose Tee fittings (kits include everything shown)



PICK-UP HOSE ID	BRANCH HOSE ID	PART NUMBER	PRICE
3/8"	3/8"	TK0375-3/8-.275	17.93
1/2"	3/8"	TK0500-3/8-.218	21.34
5/8"	3/8"	TK0625-3/8-.218	24.75
3/4"	3/8"	TK0750-3/8-.218	29.34
1"	3/8"	TK1000-3/8-.218	29.34
1-1/4"	3/8"	TK1250-3/8-.218	41.41
1-1/2"	3/8"	TK1500-3/8-.218	47.21
1-5/8"	3/8"	TK1625-3/8-.218	51.32
1-3/4"	3/8"	TK1750-3/8-.218	55.44
2"	3/8"	TK2000-3/8-.218	68.81
1"	1/2"	TK1000-1/2-.343	29.34
1-1/2"	1/2"	TK1500-1/2-.343	47.21
1-3/4"	1/2"	TK1750-1/2-.343	55.44
2"	1/2"	TK2000-1/2-.343	68.81

Water Pick-Up Kits with Hose Barb fittings (kits include everything shown)



INJECTION HOSE (SOLD BY THE FOOT)	PART NUMBER	PRICE
3/8"	INJHOSE 0375	2.97
1/2"	INJHOSE 0500	4.05

HOSE BARB SIZE	THREADED HOLE SIZE	PART NUMBER	PRICE
3/8"	1/4" NPT	IJK250-375-2000	28.58
3/8"	3/8" NPT	IJK375-375-2000	31.87
1/2"	3/8" NPT	IJK375-500-2000	31.87

Hose Tee Fittings (individual)



PICK-UP HOSE ID	BRANCH HOSE ID	PART NUMBER	PRICE
3/8"	3/8"	TH0375-3/8-.275	11.33
1/2"	3/8"	TH0500-3/8-.218	18.64
5/8"	3/8"	TH0625-3/8-.218	18.64
3/4"	3/8"	TH0750-3/8-.218	23.23
1"	3/8"	TH1000-3/8-.218	23.23
1-1/4"	3/8"	TH1250-3/8-.218	35.28
1-1/2"	3/8"	TH1500-3/8-.218	41.11
1-5/8"	3/8"	TH1625-3/8-.218	45.21
1-3/4"	3/8"	TH1750-3/8-.218	49.34
2"	3/8"	TH2000-3/8-.218	62.93
1"	1/2"	TH1000-1/2-.343	23.23
1-1/2"	1/2"	TH1500-1/2-.343	41.11
1-3/4"	1/2"	TH1750-1/2-.343	49.34
2"	1/2"	TH2000-1/2-.343	62.93

Smart Seal Temperature Monitoring System



**Single Engine Control Panel
includes sensor cable**



**Twin Engine Control Panel
includes sensor cables**



**Remote Panel
single engine**



**Remote Panel
twin engines**



Remote Warning Siren



**Extension Wire
(10M length)**



Injection Fittings

COMPONENTS

	PART NUMBER	PRICE
Single Engine Control Panel (Includes sensor cable)	TPS-SMK	498.74
Twin Engine Control Panel (Includes sensor cables)	TPS-DMK	656.25
Extension Wire	TPS-SCE	99.75
Single Engine Remote Panel Bulkhead Mount	TPS-RSBH	236.25
Twin Engine Remote Panel Bulkhead Mount	TPS-RDBH	236.25
Remote Warning Siren	SP-SS-SIREN	237.93
SS 1/4" NPT x 3/8" Hose with Sensor boss	IJH-250-375	22.51
SS 3/8" NPT x 1/2" Hose with Sensor boss	IJH-375-500	25.83

seriesOne™ Shaft Seals & Kits

seriesOne™ Shaft Seals (individual)



IMPERIAL SIZES

SHAFT DIA.	PART NUMBER	PRICE
7/8"	ONE-A-0875	\$198.74
1"	ONE-A-1000	
1-1/8"	ONE-A-1125	
1-1/4"	ONE-A-1250	

METRIC SIZES

SHAFT DIA.	PART NUMBER	PRICE
22mm	ONE-A-22M	\$198.74
25mm	ONE-A-25M	
30mm	ONE-A-30M	

seriesOne™ Shaft Seal Kit with single-convolution hose (kits include everything shown)



Shaft Seal



Lip Seal Protector



**Articulating Hose
Single-convolution**



**Hose Clamps
Non-Perforated**

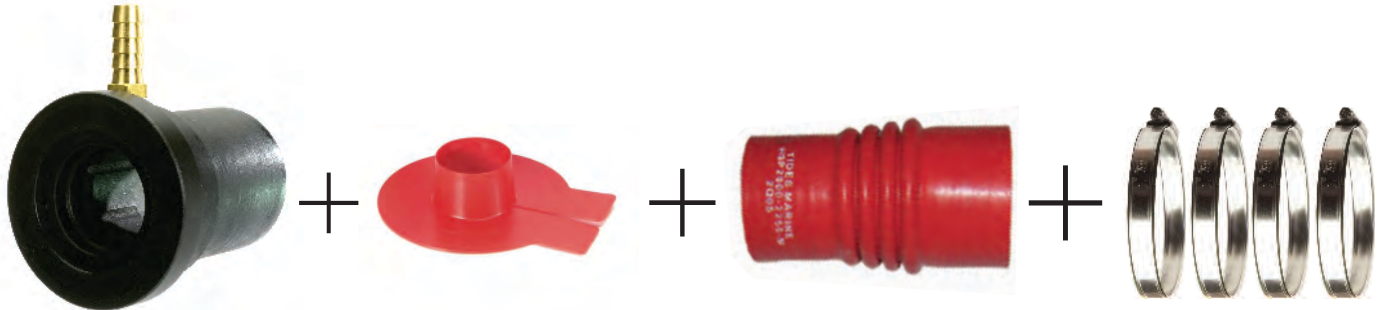
IMPERIAL SIZES

SHAFT DIA.	PART NUMBER	SHAFT DIA.	PART NUMBER
7/8"	ONE-0875-1750-S	1-1/8"	ONE-1125-1750-S
7/8"	ONE-0875-2000-S	1-1/8"	ONE-1125-2000-S
7/8"	ONE-0875-2250-S	1-1/8"	ONE-1125-2250-S
7/8"	ONE-0875-2500-S	1-1/8"	ONE-1125-2500-S
7/8"	ONE-0875-2750-S	1-1/8"	ONE-1125-2750-S
7/8"	ONE-0875-3000-S	1-1/8"	ONE-1125-3000-S
1"	ONE-1000-1750-S	1-1/4"	ONE-1250-1750-S
1"	ONE-1000-2000-S	1-1/4"	ONE-1250-2000-S
1"	ONE-1000-2250-S	1-1/4"	ONE-1250-2250-S
1"	ONE-1000-2500-S	1-1/4"	ONE-1250-2500-S
1"	ONE-1000-2750-S	1-1/4"	ONE-1250-2750-S
1"	ONE-1000-3000-S	1-1/4"	ONE-1250-3000-S

METRIC SIZES

SHAFT DIA.	PART NUMBER	PRICE
25mm	ONE-25M-45M-S	\$222.29
25mm	ONE-25M-51M-S	
25mm	ONE-25M-57M-S	
25mm	ONE-25M-63M-S	
25mm	ONE-25M-70M-S	
25mm	ONE-25M-76M-S	
30mm	ONE-30M-45M-S	
30mm	ONE-30M-51M-S	
30mm	ONE-30M-57M-S	
30mm	ONE-30M-63M-S	
30mm	ONE-30M-70M-S	
30mm	ONE-30M-76M-S	

seriesOne™
Shaft Seal Kit with multi-convolution hose
(kits include everything shown)



Shaft Seal

Lip Seal Protector

**Articulating Hose
Multi-convolution**

**Hose Clamps
Non-Perforated**

IMPERIAL SIZES

SHAFT DIA.	PART NUMBER
7/8"	ONE-0875-1750-M
7/8"	ONE-0875-2000-M
7/8"	ONE-0875-2250-M
7/8"	ONE-0875-2500-M
7/8"	ONE-0875-2750-M
7/8"	ONE-0875-3000-M
1"	ONE-1000-1625-M
1"	ONE-1000-1750-M
1"	ONE-1000-2000-M
1"	ONE-1000-2250-M
1"	ONE-1000-2500-M
1"	ONE-1000-2750-M
1"	ONE-1000-3000-M

SHAFT DIA.	PART NUMBER
1-1/8"	ONE-1125-1625-M
1-1/8"	ONE-1125-1750-M
1-1/8"	ONE-1125-2000-M
1-1/8"	ONE-1125-2250-M
1-1/8"	ONE-1125-2500-M
1-1/8"	ONE-1125-2750-M
1-1/8"	ONE-1125-3000-M
1-1/4"	ONE-1250-1625-M
1-1/4"	ONE-1250-1750-M
1-1/4"	ONE-1250-2000-M
1-1/4"	ONE-1250-2250-M
1-1/4"	ONE-1250-2500-M
1-1/4"	ONE-1250-2750-M
1-1/4"	ONE-1250-3000-M

METRIC SIZES

SHAFT DIA.	PART NUMBER
25mm	ONE-25M-41M-M
25mm	ONE-25M-45M-M
25mm	ONE-25M-51M-M
25mm	ONE-25M-57M-M
25mm	ONE-25M-63M-M
25mm	ONE-25M-70M-M
25mm	ONE-25M-76M-M
30mm	ONE-30M-41M-M
30mm	ONE-30M-45M-M
30mm	ONE-30M-51M-M
30mm	ONE-30M-57M-M
30mm	ONE-30M-63M-M
30mm	ONE-30M-70M-M
30mm	ONE-30M-76M-M

PRICE

\$222.29

SureSeal™ Replacement Nitrile Lip Seals



Note*
Lip Seals on this page are for
SureSeal™ Shaft Seal models ONLY-
shown on left and sold after the year
2000



SureSeal™ Replacement Nitrile Lip Seals

IMPERIAL SIZES

SHAFT DIAMETER	LIP SEAL NUMBER	PART NUMBER	PRICE
3/4"	9983	LIP SEAL 0750	31.24
7/8"	8465	LIP SEAL 0875	31.24
1"	9520	LIP SEAL F 1000	31.24
1-1/8"	9558	LIP SEAL F 1125	35.99
1-1/4"	5729	LIP SEAL F 1250	35.99
1-3/8"	3740	LIP SEAL F 1375	35.99
1-1/2"	9041	LIP SEAL 1500	43.35
1-3/4"	15557	LIP SEAL 1750	44.63
2"	9043	LIP SEAL F 2000	53.55
2-1/4"	10432	LIP SEAL F 2250	53.55
2-1/2"	10121	LIP SEAL F 2500	53.55
2-3/4"	11894	LIP SEAL F 2750	73.94
3"	9045	LIP SEAL 3000	73.94
3-1/4"	9547	LIP SEAL 3250	73.94
3-1/2"	11197	LIP SEAL 3500	94.35
3-3/4"	7146	LIP SEAL 3750	94.35
4"	7199	LIP SEAL 4000	94.35
4-1/4"	7040	LIP SEAL 4250	94.35
4-1/2"	9170	LIP SEAL 4500	122.38
5"	9629	LIP SEAL 5000	158.09

METRIC SIZES

SHAFT DIAMETER	LIP SEAL NUMBER	PART NUMBER	PRICE
25MM	6726	LIP SEAL F 25MM	47.46
30MM	10569	LIP SEAL F 30MM	35.99
35MM	3740	LIP SEAL F 1375	35.99
40MM	5536	LIP SEAL F 40MM	43.35
45MM	11499	LIP SEAL F 45MM	44.63
50MM	10015	LIP SEAL-50MM	53.55
55MM	18406	LIP SEAL-55MM	53.55
60MM	9319	LIP SEAL-60MM	53.55
65MM	6869	LIP SEAL-65MM	53.55
70MM	11894	LIP SEAL F 2750	73.94
75MM	15174	LIP SEAL F 75MM	73.94
80MM	4801	LIP SEAL-80MM	73.94
85MM	16431	LIP SEAL-85MM	91.15
90MM	19819	LIP SEAL F 90MM	94.35
95MM	7146	LIP SEAL 3750	94.35
100MM	9510	LIP SEAL-100MM	94.35
105MM	11790	LIP SEAL-105MM	118.60
110MM	16548	LIP SEAL-110MM	118.60
120MM	30026	LIP SEAL-120MM	122.38
125MM	19662	LIP SEAL-125MM	158.09

Strong™ Seal Replacement Nitrile Lip Seals

Note*
Lip Seals on this page are for
Strong™ Seal models ONLY-
shown on right and sold prior to
the year 2000



Strong™ Seal Replacement Nitrile Lip Seals

IMPERIAL SIZES

SHAFT DIAMETER	LIP SEAL NUMBER	PART NUMBER	PRICE
3/4"	9983	LIP SEAL 0750	31.24
7/8"	8465	LIP SEAL 0875	31.24
1"	9257	LIP SEAL 1000	31.24
1-1/8"	9460	LIP SEAL 1125	35.99
1-1/4"	5728	LIP SEAL 1250	35.99
1-3/8"	15099	LIP SEAL 1375	35.99
1-1/2"	9041	LIP SEAL 1500	43.35
1-3/4"	15557	LIP SEAL 1750	44.63
2"	11551	LIP SEAL 2000	53.55
2-1/4"	10418	LIP SEAL 2250	53.55
2-1/2"	8497	LIP SEAL 2500	53.55
2-3/4"	9732	LIP SEAL 2750	73.94
3"	9045	LIP SEAL 3000	73.94
3-1/4"	9547	LIP SEAL 3250	73.94
3-1/2"	11197	LIP SEAL 3500	94.35
3-3/4"	7146	LIP SEAL 3750	94.35
4"	7199	LIP SEAL 4000	94.35
4-1/4"	7040	LIP SEAL 4250	94.35
4-1/2"	9170	LIP SEAL 4500	122.38
5"	9629	LIP SEAL 5000	158.09

METRIC SIZES

SHAFT DIAMETER	LIP SEAL NUMBER	PART NUMBER	PRICE
25MM	6084	LIP SEAL-25MM	31.24
30MM	17236	LIP SEAL-30MM	35.99
35MM	15099	LIP SEAL 1375	35.99
40MM	18329	LIP SEAL-40MM	43.35
45MM	15265	LIP SEAL-45MM	44.63
50MM	10015	LIP SEAL-50MM	53.55
55MM	18406	LIP SEAL-55MM	53.55
60MM	9319	LIP SEAL-60MM	53.55
65MM	6869	LIP SEAL-65MM	53.55
70MM	9732	LIP SEAL-2750	73.94
75MM	15089	LIP SEAL-75MM	73.94
80MM	4801	LIP SEAL-80MM	73.94
85MM	16431	LIP SEAL-85MM	91.15
90MM	30019	LIP SEAL-90MM	94.35
95MM	7146	LIP SEAL 3750	94.35
100MM	9510	LIP SEAL-100MM	94.35
105MM	11790	LIP SEAL-105MM	118.60
110MM	16548	LIP SEAL-110MM	118.60
120MM	30026	LIP SEAL-120MM	122.38
125MM	19662	LIP SEAL-125MM	158.09

Hose Clamps & Articulating Hose

Hose Clamps Non-Perforated



FOR HOSE DIAMETER(S)	PART NUMBER	PRICE
3/8"	CLAMP-0375	2.77
1/2"	CLAMP-0500	2.82
1-1/2"	CLAMP-1500	4.99
1-3/4" - 2"	CLAMP-2000	5.04
2-1/8" - 2-3/8"	CLAMP-2250	7.06
2-1/2" - 2-5/8"	CLAMP-2500	7.52
2-3/4" - 3-1/8"	CLAMP-3000	8.00
3-1/4" - 3-1/2"	CLAMP-3500	8.48
3-3/4" - 4"	CLAMP-4000	8.48
4-1/8" - 4-1/4"	CLAMP-4250	9.14

FOR HOSE DIAMETER(S)	PART NUMBER	PRICE
4-1/2"	CLAMP-4500	9.80
5 - 5-1/4"	CLAMP-5000	10.42
5-1/2"	CLAMP-5500	11.50
6"	CLAMP-6000	11.90
6-1/2"	CLAMP-6500	12.94
7"	CLAMP-7000	13.81
7-1/2"	CLAMP-7500	13.81
8"	CLAMP-8000	15.23
8-5/8"	CLAMP-8625	16.63

Articulating Hose

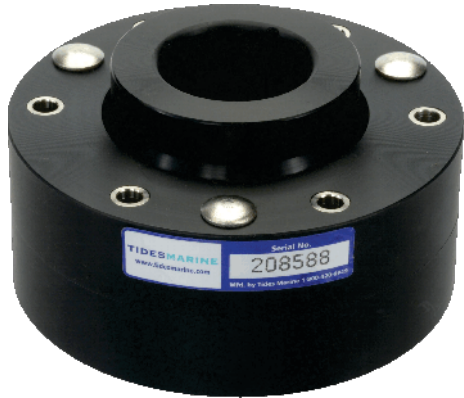


HOSE DIAMETER(S)	PART NUMBER	PRICE
1-3/4" - 2"	HS 1750-2000	84.67
2" - 2"	HS 2000-2000	70.57
2-1/4" - 2-3/8"	HS 2250-2375	77.62
2-1/2" - 2-5/8"	HS 2500-2625	79.97
2-1/2" - 2-3/4"	HS 2500-2750	82.32
3"	HS 3000-3000	84.67
3" - 3-1/2"	HS 3000-3500	89.39
3-1/4"	HS 3250-3250	90.44
3-1/2"	HS 3500-3500	94.08
3-1/2" - 3-3/4"	HS 3500-3750	94.08
3-1/2" - 4"	HS 3500-4000	94.08

HOSE DIAMETER(S)	PART NUMBER	PRICE
4" - 4-1/4"	HS 4000-4250	103.50
4" - 4-1/2"	HS 4000-4500	108.19
4" - 5"	HS 4000-5000	152.50
4-1/2"	HS 4500-4500	127.01
4-1/2" - 5"	HS 4500-5000	127.01
5" - 5-1/2"	HS 5000-5500	153.68
5" - 6"	HS 5000-6000	136.42
5-1/2" - 6-1/2"	HS 5500-6500	216.39
6-1/2" - 7"	HS 6500-7000	270.48
6-1/2" - 8"	HS 6500-8000	305.78

Upper Rudder Bearings Standard & Low Profile

Upper Rudder Bearing Standard Profile



SHAFT DIAMETER	PART NUMBER	PRICE
1"	URB-STD-1000	137.80
1-1/4"	URB-STD-1250	208.96
1-3/8"	URB-STD-1375	266.92
1-1/2"	URB-STD-1500	316.01
1-3/4"	URB-STD-1750	349.40
1-7/8"	URB-STD-1875	386.07
2"	URB-STD-2000	406.27
2-1/4"	URB-STD-2250	437.33
2-1/2"	URB-STD-2500	494.46
2-3/4"	URB-STD-2750	650.95
3"	URB-STD-3000	885.47
3-1/4"	URB-STD-3250	976.13
3-1/2"	URB-STD-3500	1,203.86
3-3/4"	URB-STD-3750	1,592.43
4"	URB-STD-4000	2,218.14
4-1/2"	URB-STD-4500	2,398.18
5"	URB-STD-5000	2,820.96
5-1/2"	URB-STD-5500	4,205.54

Upper Rudder Bearing Low Profile



SHAFT DIAMETER	PART NUMBER	PRICE
1"	URB-LP-1000	137.34
1-1/8"	URB-LP-1125	173.15
1-1/4"	URB-LP-1250	208.96
1-3/8"	URB-LP-1375	266.92
1-1/2"	URB-LP-1500	316.01
1-3/4"	URB-LP-1750	349.40
2"	URB-LP-2000	406.27
2-1/4"	URB-LP-2250	437.33
2-3/8"	URB-LP-2375	465.87
2-1/2"	URB-LP-2500	494.46
2-3/4"	URB-LP-2750	650.95
3"	URB-LP-3000	885.47
3-1/2"	URB-LP-3500	1,203.86
4"	URB-LP-4000	2,218.14
4-1/2"	URB-LP-4500	2,398.18
5"	URB-LP-5000	2,820.96

Rudder Port/Bearing Tube System & Type C

Rudder Port/Bearing Tube System



SHAFT DIAMETER	PART NUMBER	PRICE
1-1/8"	TS-1125	393.98
1-1/4"	TS-1250	399.23
1-3/8"	TS-1375	431.53
1-1/2"	TS-1500	473.28
1-5/8"	TS-1625	546.15
1-3/4"	TS-1750	546.15
2"	TS-2000	625.39
2-1/4"	TS-2250	714.28
2-3/8"	TS-2375	727.98
2-1/2"	TS-2500	798.37
2-3/4"	TS-2750	893.54
3"	TS-3000	1,015.69
3-1/4"	TS-3250	1,037.27
3-1/2"	TS-3500	1,138.42
4"	TS-4000	1,757.02
5"	TS-5000	2,795.47

Rudder Port/Bearing Type C



SHAFT DIAMETER	PART NUMBER	PRICE
1"	RPB-C-1000	162.96
1-1/8"	RPB-C-1125	256.70
1-1/4"	RPB-C-1250	310.99
1-1/2"	RPB-C-1500	470.34
1-3/4"	RPB-C-1750	520.04
2"	RPB-C-2000	604.64
2-1/4"	RPB-C-2250	650.86
2-1/2"	RPB-C-2500	799.00
2-3/4"	RPB-C-2750	902.92
3"	RPB-C-3000	1,129.76
3-1/4"	RPB-C-3250	1,280.29
3-1/2"	RPB-C-3500	1,430.82
3-3/4"	RPB-C-3750	1,774.94
4"	RPB-C-4000	2,373.30
4-1/2"	RPB-C-4500	3,236.17
5"	RPB-C-5000	3,940.00
5-1/2"	RPB-C-5500	4,955.93
6"	RPB-C-6000	5,731.38

Rudder Port/Bearing Type D & Type E

Rudder Port/Bearing Type D



Note*
Pricing shown is for the Type D
Bearing and seal unit only
pictured above.

*Installation tools and
accessories (mandrels,
threaded rods, fiberglass inserts
etc.) are supplied at no charge
to builders for production
installation only.*

SHAFT DIAMETER	PART NUMBER	PRICE
1"	RPB-D-1000	185.58
1-1/8"	RPB-D-1125	185.58
1-1/4"	RPB-D-1250	197.33
1-3/8"	RPB-D-1375	230.51
1-1/2"	RPB-D-1500	263.19
1-3/4"	RPB-D-1750	360.81
2"	RPB-D-2000	429.96
2-1/4"	RPB-D-2250	560.97
2-3/8"	RPB-D-2375	593.32
2-1/2"	RPB-D-2500	625.66
2-3/4"	RPB-D-2750	697.40
3"	RPB-D-3000	771.49
3-1/2"	RPB-D-3500	870.28
4"	RPB-D-4000	1,015.81
4-1/4"	RPB-D-4250	1,269.40
4-1/2"	RPB-D-4500	1,522.99

Rudder Port/Bearing Type E



SHAFT DIAMETER	PART NUMBER	PRICE
1"	RPB-E-1000	324.18
1-1/4"	RPB-E-1250	347.59
1-1/2"	RPB-E-1500	371.00
1-3/4"	RPB-E-1750	386.31
2"	RPB-E-2000	401.59
2-1/4"	RPB-E-2250	417.32
2-1/2"	RPB-E-2500	433.02
2-3/4"	RPB-E-2750	465.21
3"	RPB-E-3000	497.40
3-1/4"	RPB-E-3250	512.39
3-1/2"	RPB-E-3500	527.52
4"	RPB-E-4000	610.77
4-1/4"	RPB-E-4250	668.68
4-1/2"	RPB-E-4500	726.56
5"	RPB-E-5000	914.69
5-1/2"	RPB-E-5500	1,045.66
6"	RPB-E-6000	1,385.43
6-1/2"	RPB-E-6500	1,754.26

Rudder Port/Bearing Type F & Type G

Rudder Port/Bearing Type F



SHAFT DIAMETER	PART NUMBER	PRICE
1-1/2"	RPB-F-1500	371.00
1-3/4"	RPB-F-1750	386.31
2"	RPB-F-2000	401.59
2-1/2"	RPB-F-2500	433.02
2-3/4"	RPB-F-2750	465.21
3"	RPB-F-3000	497.40
3-1/4"	RPB-F-3250	512.44
3-1/2"	RPB-F-3500	527.52
4"	RPB-F-4000	610.77
4-1/2"	RPB-F-4500	726.56
4-3/4"	RPB-F-4750	820.63
5"	RPB-F-5000	914.69

Rudder Port/Bearing Type G



SHAFT DIAMETER	PART NUMBER	PRICE
1-1/2"	RPB-G-1500	207.05
1-3/4"	RPB-G-1750	237.47
2"	RPB-G-2000	267.83
2-1/4"	RPB-G-2250	279.33
2-1/2"	RPB-G-2500	293.98
2-3/4"	RPB-G-2750	331.72
3"	RPB-G-3000	340.14
3-1/2"	RPB-G-3500	354.36
4"	RPB-G-4000	410.69
4-1/2"	RPB-G-4500	478.04
5"	RPB-G-5000	566.99

Rudder Port/Bearing Type H



SHAFT DIAMETER	PART NUMBER	PRICE
1-1/2"	RPB-H-1500	205.67
1-3/4"	RPB-H-1750	217.99
2"	RPB-H-2000	230.30
2-1/4"	RPB-H-2250	240.18
2-3/8"	RPB-H-2375	246.44
2-1/2"	RPB-H-2500	252.78
2-3/4"	RPB-H-2750	285.24
3"	RPB-H-3000	292.46
3-1/2"	RPB-H-3500	304.70
4"	RPB-H-4000	353.13
4-1/2"	RPB-H-4500	434.20
5"	RPB-H-5000	515.00
5-1/2"	RPB-H-5500	577.19
6"	RPB-H-6000	671.19
6-1/2"	RPB-H-6500	750.16

Rudder Port/Bearing Type I



SHAFT DIAMETER	PART NUMBER	PRICE
1-1/2"	RPB-I-1500	345.86
1-3/4"	RPB-I-1750	368.84
2"	RPB-I-2000	428.89
2-1/4"	RPB-I-2250	461.67
2-1/2"	RPB-I-2500	554.90
2-3/4"	RPB-I-2750	648.12
3"	RPB-I-3000	761.90
3-1/4"	RPB-I-3250	931.49
3-1/2"	RPB-I-3500	970.42
4"	RPB-I-4000	1,132.88
4-1/2"	RPB-I-4500	1,465.89
5"	RPB-I-5000	1,798.92

Rudder Port/Bearing Type J & Type K

Rudder Port/Bearing Type J



SHAFT DIAMETER	PART NUMBER	PRICE
1-1/2"	RPB-J-1500	330.26
1-3/4"	RPB-J-1750	362.87
2"	RPB-J-2000	413.39
2-1/4"	RPB-J-2250	480.33
2-1/2"	RPB-J-2500	580.34
2-3/4"	RPB-J-2750	686.35
3"	RPB-J-3000	791.69
3-1/2"	RPB-J-3500	1,003.17

Rudder Port/Bearing Type K (individual)



SHAFT DIAMETER	BUILDER	PART NUMBER	PRICE
1-1/2"	Bertram	RPB-K-1500	324.09
1-3/4"	Bertram	RPB-K-1750	405.63
2"	Bertram	RPB-K-2000	461.66
2"	Bertram	RPB-K-2000	461.66
2-1/2"	Bertram	RPB-K-2250	559.29
2-31/64"	Bertram	RPB-K-2490	559.29
2-1/2"	Bertram	RPB-K-2500	559.29
2-3/4"	Bertram	RPB-K-2750	612.52
3"	Bertram	RPB-K-3000	665.73
3-1/2"	Bertram	RPB-K-3500	951.04

Rudder Port/Bearing Type K Kit



SHAFT DIAMETER	PART NUMBER	BUILDER	PRICE
2"	RPB-KT-2000-00	Hatteras	659.51
2"	RPB-KT-2000-01	Viking	659.51
2"	RPB-KT-2000-02	Davis	659.51
2-1/2"	RPB-KT-2500-00	Hatteras	799.00
2-1/2"	RPB-KT-2500-02	Viking	799.00
3"	RPB-KT-3000-00	Hatteras	951.04
3"	RPB-KT-3000-01	Viking	951.04

Insert

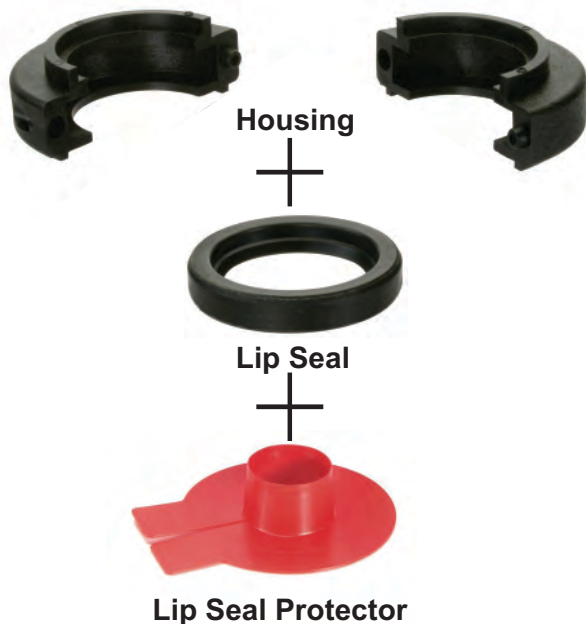
Rudder Collars



SHAFT DIAMETER	PART NUMBER	PRICE
1"	RUD COLLAR-1000	45.80
1-1/4"	RUD COLLAR-1250	51.60
1-3/8"	RUD COLLAR-1375	55.77
1-1/2"	RUD COLLAR-1500	59.97
1-3/4"	RUD COLLAR-1750	86.33
2"	RUD COLLAR-2000	112.75
2-1/4"	RUD COLLAR-2250	121.46
2-1/2"	RUD COLLAR-2500	135.15
2-3/4"	RUD COLLAR-2750	150.96
3"	RUD COLLAR-3000	160.84
3-1/2"	RUD COLLAR-3500	196.47
4"	RUD COLLAR-4000	210.38
4-1/2"	RUD COLLAR-4500	379.81
5"	RUD COLLAR-5000	549.25

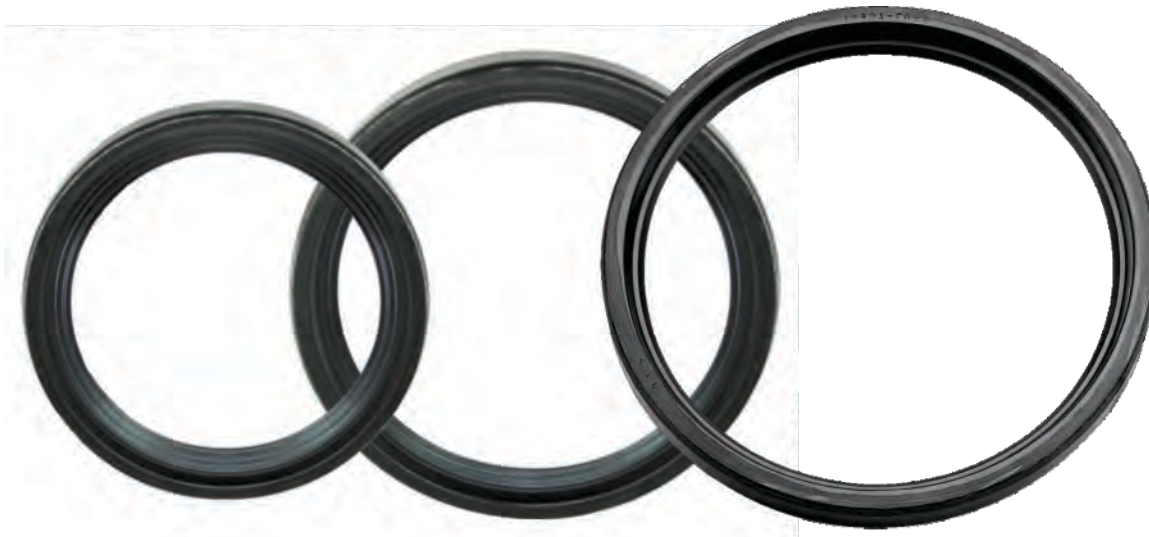
Spare Rudder Seal Carrier Kits

(kits include everything shown)



SHAFT DIAMETER	PART NUMBER	PRICE
2"	KR-2000-00	121.62
2"	KR-2000-01	121.62
2-1/4"	KR-2250-00	130.83
2-1/2"	KR-2500-00	153.79
2-3/4"	KR-2750-00	174.45
3"	KR-3000-00	195.52
3-1/4"	KR-3250-00	217.05
3-1/2"	KR-3500-00	232.42
3-3/4"	KR-3750-00	255.00
4"	KR-4000-00	282.39
4-1/2"	KR-4500-00	355.03
5"	KR-5000-00	397.11
5-1/2"	KR-5500-00	709.65
6"	KR-6000-00	765.28
7-1/2"	KR-7500-00	1,035.75

Replacement Rudder Seals for Tube system & Types C,E,F,I,J,K Assemblies



IMPERIAL SIZES

SHAFT DIAMETER	LIP SEAL NUMBER	PART NUMBER	PRICE
1-1/2"	9041	LIP SEAL 1500	43.35
1-3/4"	15557	LIP SEAL 1750	44.63
2"	14783	LIP SEAL R 2000	53.55
2-1/4"	17307	LIP SEAL R 2250	53.55
2-1/2"	11814	LIP SEAL R 2500	53.55
2-3/4"	11023	LIP SEAL R 2750	73.94
3"	10901	LIP SEAL R 3000	73.94
3-1/2"	10914	LIP SEAL R 3500	94.35
4"	10900	LIP SEAL R 4000	94.35
4-1/2"	12269	LIP SEAL R 4500	122.38
5"	10906	LIP SEAL R 5000	158.09
5-1/2"	19402	LIP SEAL R 5500	158.09
6"	17956	LIP SEAL R 6000	158.09
6-1/2"	10267	LIP SEAL 6500	176.86

METRIC SIZES

SHAFT DIAMETER	LIP SEAL NUMBER	PART NUMBER	PRICE
25MM	6084	LIP SEAL-25MM	31.24
30MM	17236	LIP SEAL-30MM	35.99
40MM	18329	LIP SEAL-40MM	43.35
45MM	15265	LIP SEAL-45MM	44.63
50MM	10015	LIP SEAL-50MM	53.55
55MM	18406	LIP SEAL-55MM	53.55
60MM	9319	LIP SEAL-60MM	53.55
65MM	6869	LIP SEAL-65MM	53.55
70MM	11023	LIP SEAL R 2750	73.94
75MM	15089	LIP SEAL-75MM	73.94
80MM	4801	LIP SEAL-80MM	73.94
85MM	16431	LIP SEAL-85MM	91.15
90MM	30019	LIP SEAL-90MM	94.35

Replacement Rudder Seals for Type D units

Note*
Lip Seals on this page are
for the Type D Rudder
Port/Bearing ONLY- shown
on right. All other Tides
Rudder Assemblies
use Seals listed on page
20.



IMPERIAL SIZES

SHAFT DIAMETER	LIP SEAL NUMBER	PART NUMBER	PRICE
1-1/4"	LIP SEAL 1250 or LIP SEAL G 1250	5728 631	35.99
1-3/8"	LIP SEAL 1375 or LIP SEAL G 1375	15099 708	35.99
1-1/2"	LIP SEAL 1500 or LIP SEAL G 1500	9041 635	43.35
1-3/4"	LIP SEAL 1750	15557	44.63
1-7/8"	LIP SEAL 1875	8989	60.38
2"	LIP SEAL R 2000 or LIP SEAL G 2000	14783 1206	53.55
2-1/4"	LIP SEAL R 2250	17307	53.55
2-1/2"	LIP SEAL R 2500	11814	53.55
2-3/4"	LIP SEAL R 2750	11023	73.94
3"	LIP SEAL R 3000	10901	73.94
3-1/2"	LIP SEAL R 3500	10914	94.35
4"	LIP SEAL R 4000 or LIP SEAL G 4000	10900 4651	94.35
4-1/4"	LIP SEAL R 4250	13653	94.35
4-1/2"	LIP SEAL R 4500	12269	122.38

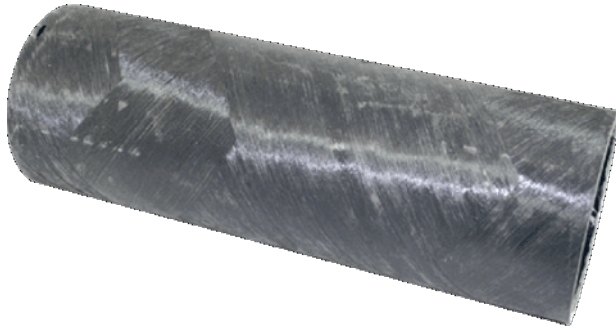
METRIC SIZES

SHAFT DIAMETER	LIP SEAL NUMBER	PART NUMBER	PRICE
25MM	6726	LIP SEAL F 25MM	31.24
30MM	10569	LIP SEAL F 30MM	35.99
35MM	15099	LIP SEAL 1375	35.99
40MM	5536	LIP SEAL F 40MM	43.35
45MM	15265	LIP SEAL 45MM	44.63
50MM	10015	LIP SEAL 50MM	53.55
60MM	9319	LIP SEAL 60MM	53.55
65MM	6869	LIP SEAL 65MM	53.55
70MM	11023	LIP SEAL R 2750	73.94
80MM	4801	LIP SEAL 80MM	73.94
85MM	16431	LIP SEAL 85MM	91.15

The Type D Rudder Assemblies have been produced using lip seals from two different manufacturers.

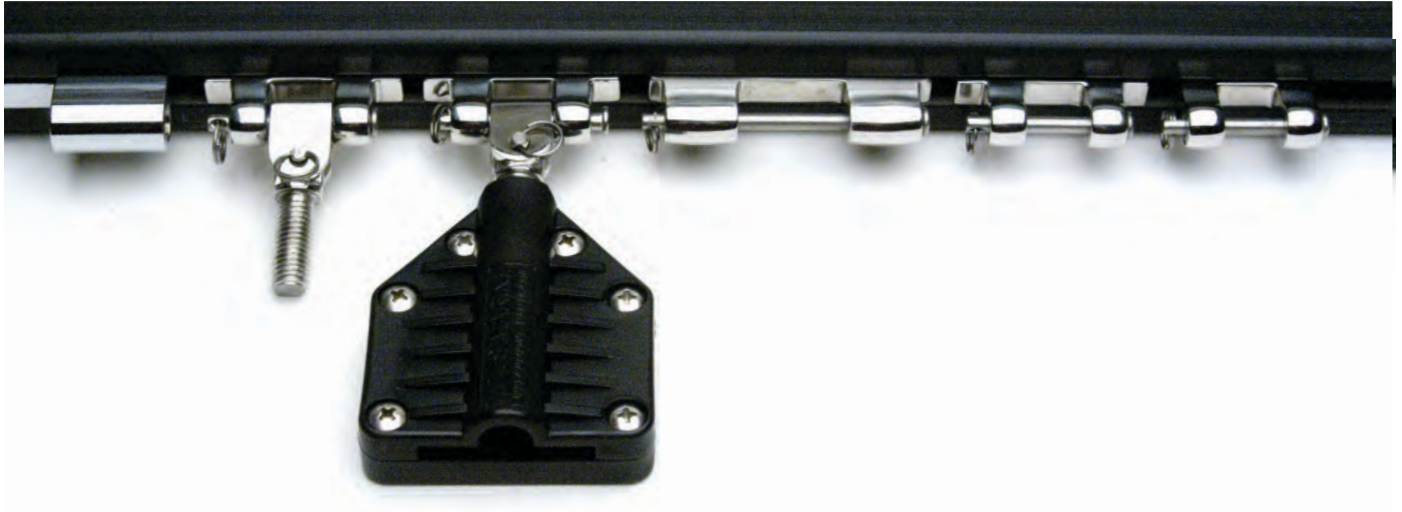
When more than one lip seal is offered for a single shaft size, please double check your part for an accurate lip seal number stamped on the flat surface of your lip seal.

Zero Draft FRP Tube



Zero Draft FRP Tube

TUBE INSIDE DIAMETER	MAXIMUM LENGTH (IN.)	PART NUMBER	PRICE
3"	48"	FRP-TUBE-3000	125.00/Ft
3-1/2"	48"	FRP-TUBE-3500	125.00/Ft
4"	48"	FRP-TUBE-4000	135.00/Ft
4-1/2"	48"	FRP-TUBE-4500	140.00/Ft
5"	48"	FRP-TUBE-5000	165.00/Ft
5-1/2"	48"	FRP-TUBE-5500	175.00/Ft
6"	48"	FRP-TUBE-6000	185.00/Ft
6-1/2"	48"	FRP-TUBE-6500	195.00/Ft
7"	20"	FRP-TUBE-7000	265.00/Ft
7-1/2"	20"	FRP-TUBE-7500	270.00/Ft
8"	20"	FRP-TUBE-8000	294.00/Ft



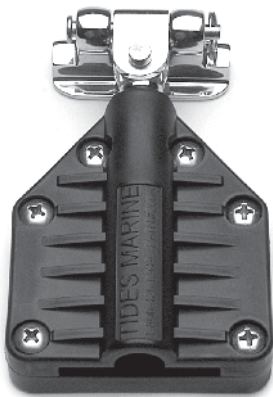
With Stainless Steel Hardware

DESCRIPTION	PRICE
Complete System	30.56/Ft
Track Only	14.33/Ft
Hardware Only	16.22/Ft

With Naval Brass Hardware

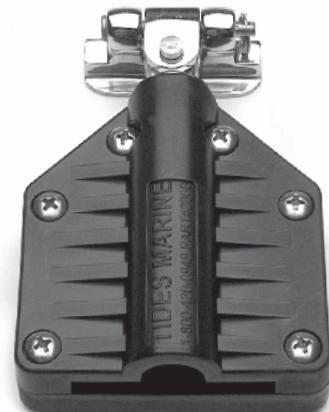
DESCRIPTION	PRICE
Complete System	34.61/Ft
Track Only	14.33/Ft
Hardware Only	20.28/Ft

Small Batten Receptacle



SH-200A-SS

Large Batten Receptacle



SH-200B-SS

DESCRIPTION	PART NUMBER	PRICE
Small Receptacle With Hardware - Stainless	SH-200A SS	94.13
Small Receptacle With Hardware - Naval Brass	SH-200A	100.47
Large Receptacle With Hardware - Stainless	SH-200B SS	106.77
Large Receptacle With Hardware - Naval Brass	SH-200B	113.06
Small Receptacle - No Hardware	SH-200A-H	37.71
Large Receptacle - No Hardware	SH-200B-H	50.24

Sailtrack System Replacement Slides



SH-600



SH-401



SH-500



SH-402



SH-400



SH-403

DESCRIPTION	PART NUMBER	PRICE
2" Slide - Universal & 10mm Stud - Stainless	SH-400 SS	58.51
2" Slide - Universal & 10mm Stud - Naval Brass	SH-400	67.05
2" Reef Slide - Stainless	SH-401 SS	29.25
2" Reef Slide - Naval Brass	SH-401	34.18
Universal With 10mm Stud - Stainless	SH-402 SS	29.25
Universal With 10mm Stud - Naval Brass	SH-402	32.93
Slide For Original Battslide - Stainless	SH-403 SS	36.61
Slide For Original Battslide - Naval Brass	SH-403	42.02
3" Headboard Slide - Stainless	SH-500 SS	36.61
3" Headboard Slide - Naval Brass	SH-500	42.02
1 3/8" Intermediate Slide - Stainless	SH-600 SS	21.96
1" 3/8" Intermediate Slide - Naval Brass	SH-600	26.82
Aquabatten 305 Backing Plate With Stainless Slide	SH-800A SS	109.75
Aquabatten 305 Backing Plate With Naval Brass Slide	SH-800S	121.95
Aquabatten 306 Backing Plate With Stainless Slide	SH-800B SS	121.95
	SH-800B	134.98

DESCRIPTION	PART NUMBER	PRICE
<p data-bbox="115 695 586 726">Stainless Car with two 3.00" L. Stainless Slides</p> 	<p data-bbox="1123 940 1268 972">SH-910-SST</p>	<p data-bbox="1382 940 1468 972">270.38</p>
<p data-bbox="115 1339 289 1371">DESCRIPTION</p> <p data-bbox="115 1402 618 1434">Aluminum Car with two 3.00" L. Stainless Slides</p> 	<p data-bbox="1123 1640 1219 1671">SH-930</p>	<p data-bbox="1382 1640 1468 1671">297.41</p>

Limited Warranty Policy

Unless covered by specific product warranty, merchandise is guaranteed for two years or 2500 engine hours (whichever comes first) against defects in material or workmanship. Tides Marine is not liable for part failure due to improper installation or misuse. If parts appear to be defective, call Tides Marine to obtain a Warranty Return Authorization Number (WRA). Then return the parts for full credit or replacement. Any alteration or change to Tides Marine products automatically voids this warranty. For the complete limited warranty statement, visit our website at www.tidesmarine.com

Restocking Fee

All returned products will be subject to a 15% restocking fee.

TIDSMARINE
innovative products for the marine industry

3251A S.W. 13th Drive
Deerfield Beach, FL 33442
Toll Free Phone: (800) 420-0949
General Phone: (954) 420-0949
General Fax: (954) 420-5234
Order Fax: (954) 420-0945

WWW.TIDSMARINE.COM